

SECTION 18, T.7N., R.1E., S.L.B. & M.

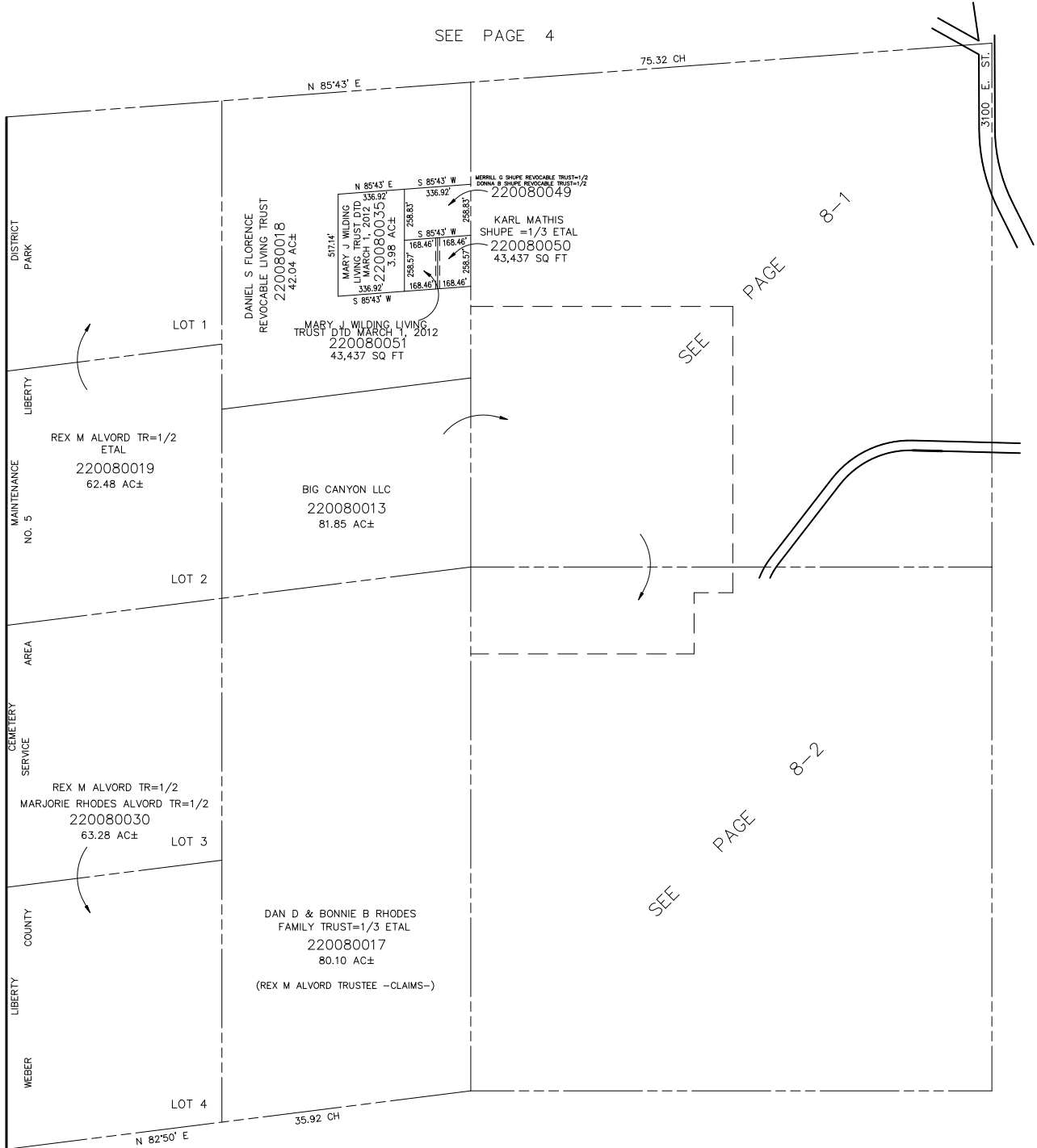
IN WEBER COUNTY

SCALE 1" = 400'

TAXING UNIT: 36

SEE PAGE 4

SEE BOOK 16, PAGE 6



SEE PAGE 8-1

SEE PAGE 8-2

SEE PAGE 7

SEE PAGE 9-3

SEE PAGE 9